

BOISSEVAIN Street Fest

SATURDAY
SEPT 13
SOUTH RAILWAY STREET
DOWNTOWN BOISSEVAIN



Free Family Fun • Carnival Treats • Live Entertainment • Kids Zone

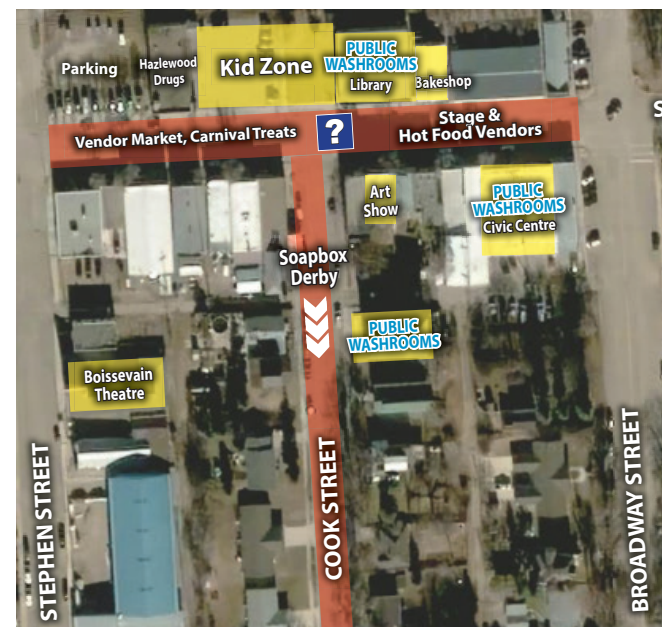
- 8am-4:30pm **Donuts, Coffee & More Sweet Eats** at Boissevain Bakeshop
- 9am-12pm **Town-Wide Garage Sales**
- 9am-2pm **Street Fest Specials** at The Sawmill
Chili & Bun starting at 11am while supplies last. Acoustic set by Aaron Frost 11am-1pm.
- 11am **Soapbox Derby** hosted by Boissevain Lions Club
Registration opens at 9:30am, practice races to follow, main event at 11am on Cook Street heading south
- 11am-3pm **Get Local Art Show** at Casey Guenther Designs Gallery
Live Art Demos and Artisans onsite outside the gallery
- 11am-4pm **Vendor Market**
- 11am-4pm **BBQ Lunch** fundraiser for Westman Animal Rescue
Hot dog, chips & drink \$8, burger, chips & drink \$11, cheeseburger, chips & drink \$12, freezies \$2
- 11am-4pm **Carnival Lunch** fundraiser for Turtle Mountain Métis Local
French fries \$4, fry bread \$3, corn on the cob \$3 or 2 for \$5
- 12pm-6pm **Caricaturist Alan Sideen**
- 12pm-4pm **Boundary Co-op Kids Club Zone** Romance of the Railway Park
Kids Carnival, Bouncy Castle, Puppet Making Workshop, and Roving Characters
- 12-4pm **Mini Golf** Free, open to all. Finish all 9 holes and enter to win a prize pack at Info Booth.
- 12-4pm **Sunrise Face Painting Tent** Free
- 12pm-4pm **Henna Tattoos & Festival Hair/Braiding** Pay per piece
- 1:30pm **Pie Eating Contest** hosted by Sunrise Credit Union & Boundary Co-op
Register at the Information Booth.
- 2pm **Puppet Show: Return of the Turtle Derby**
- 2:30pm **Lyle Baldwin** Live performance on outdoor stage
Multi-instrumentalist & vocalist. Bring your dancing shoes!
- 3pm-11pm **Beer Gardens** hosted by Turtle Mountain Ag Society
- 4pm **Despicable Me 4** MNP Free matinee at Boissevain Theatre
- 4-5:30pm **Community Bingo** @ Community Centre upstairs
Open to all, cash prizes. Purchase bingo cards at Information Booth.
Concession by Boissevain Community Centre
- 7:30pm **Vintage Voltage**
Classic rock band in the beer gardens



MUNICIPALITY OF
BOISSEVAIN-MORTON



Boundary Co-op



STREET CLOSURES on September 13

- South Railway St: closed from Stephen to Broadway 8am-1am
- Cook Street: closed from South Railway to Ducker 8am-4pm



BOISSEVAIN-MORTON **PARKS & RECREATION**

**Stay tuned
for updates**

www.boissevain.ca

Facebook: Boissevain Street Fest

